



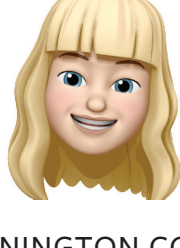
# JSR ASSOCIATES, INC. NEWSLETTER



SEPTEMBER/OCTOBER ISSUE 2020

HEALTHCARE AND SENIOR LIVING DESIGN CONSULTANTS WHO BELIEVE PEOPLE ARE AT THE CENTER OF ALL WE DO.

## Where's Jane?



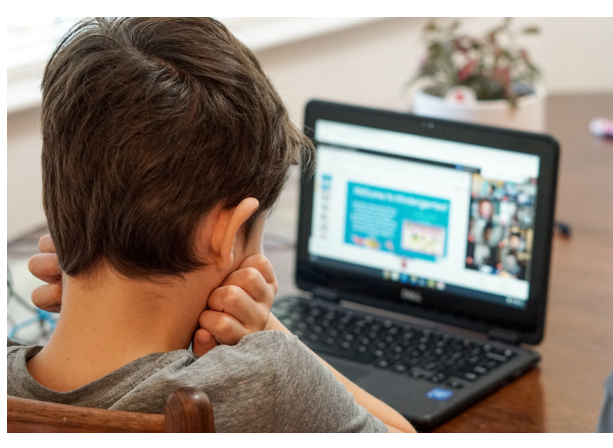
## the BUZZ

This issue covers updates on our project, Evermore Senior Living. Other important news includes information on Maryland schools, "pandemic pods," and how these pods can be integrated into senior living and the Live Together™ Community model, as a recap of August's blog post. Link provided below to the Household care model webinar from the Ageless Living Collaborative.

SEPT 22 MANNINGTON COMMERCIAL  
[Workplace Current Events CEU](#)  
2:00pm EST / 11:00am PST

SEPT 30 CENTER FOR HEALTH DESIGN'S  
[Aging Virtual Workshop: Design for Healthy Aging: Solutions Across the Continuum of Care Workshop](#)  
10:45am- 4:30pm EST

## "PANDEMIC PODS" & REMOTE LEARNING IN MARYLAND SCHOOLS



As schools begin to reopen for the 2020-2021 school year, parents, schools, and public officials are determining how best to proceed in the wake of the coronavirus pandemic. Across the country, there have been discussions over remote learning, in-school classes, and "pandemic pods." These pods may be a way for parents to [provide](#) socialization and emotional support for their kids, have realistic childcare options, and have a reduction of exposure risks. These pods can include anywhere between [three to ten students](#)

in a group, followed by the added risk of whoever is in each of their households. A potential problem, beyond exposure risks, includes a financial component: "[Parents who can't work from home and teach their children, or pay someone to do it for them, will lose out in the short- and long-term.](#)" Those children able to be in a pandemic pod may end up having a large advantage over those unable to do it. One way to combat this challenge for working parents is to introduce grandparents or older relatives into the pandemic pod. Retired seniors could benefit from the company and provide care and instruction while giving parents more flexibility in how they manage work and caretaking. Introducing an intergenerational approach into the pod may also allow for a new way to contain potential spread and minimize the amount of separate families within each pod; if seniors are a part of the pod, each individual must also be aware of the added risk factors for persons ages 65 and up. As of now, many Maryland public school children and their families will be faced with this decision and might want to consider this intergenerational solution. Public schools in Maryland will be held remote for the beginning of the year, whereas certain private schools may remain open. In certain counties, like [Montgomery](#), health officials will bar private schools from reopening in person, regardless of the school officials' desires. Other private schools do have more flexibility due to their funds; these include more space, ability to expand resources, and, for some Catholic schools, lower enrollment to begin with. Should parents decide to pursue a pod approach, they must be sure to adhere to [requirements](#) by the state. For those who cannot or do not, the schools must be aware of how this may affect families and children so students can be better served throughout these unprecedented times.

### IN CASE YOU missed it

Were you unable to make the latest webinar series from the Ageless Living Collaborative (ALC), "Small Houses: Is Small House Design Right for You? Exploring Pros and Cons?"



Ageless Living Collaborative  
Wisdom for Your Senior Lifestyle

Check it out [here](#).

The ALC is a collective of advocates who are passionately dedicated to creating optimum outcomes for senior living.



## BLOG RECAP

In last week's blog post, Alexandra investigates how we may be able to apply conversations around "nano schools" and "pandemic pods" to senior living. She shares stories of how quarantine has personally affected her grandparents, who reside in an independent living facility located in Maryland, and she relates it to the effects many seniors now experience due to the challenges of coronavirus. Some effects include cognitive decline and higher mental risks.

Read more about it [here!](#)

## LIVE TOGETHER™ & "PANDEMIC PODS"

In our [press release](#) published back in April, the announcement of all things possible with a Live Together™ model became apparent: "sites...can be as varied as the people living there." In approaching new construction or any innovation for communities, the coronavirus pandemic will need to be a part of current and future discussions and considerations. Live Together™ "designs for communal living in a household model [that] can offer private sleeping spaces, socialization, and higher levels of safe care continuity, while increasing affordability." One way to address safety now could be through the application of "[pandemic pods](#)," as mentioned in [August's blog post](#). Since a Live Together™ model strives to connect individuals across generations, there are many opportunities for each pod to include varied age groups and consistent staff workers. This variation is especially important for elders and individuals from low-income backgrounds who may be disproportionately affected by isolation due to less access to technology or adeptness at using things like social media and video conferencing. Spaces like the engagement center, which can hold more community members at once, may need to be used in shifts. Or, the engagement center could be built

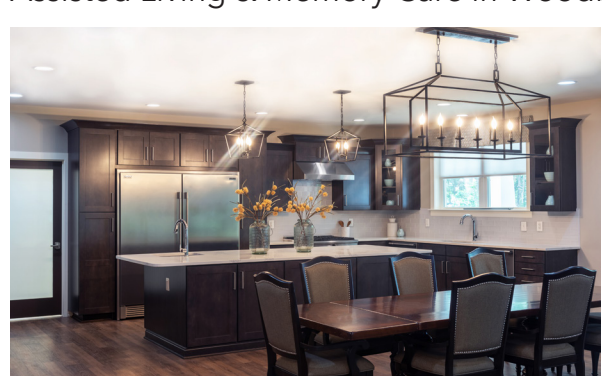


to convert seamlessly into an outdoor space or into smaller centers around the property that hold the maximum number of people allowed as stated by CDC guidelines. Another approach could be to construct rooms that are conducive to safe visits from family members and friends outside of the facility like the plexiglass one in Boulder, Colorado at the [Frasier Retirement Community](#). For all engaged in a pod, whether it be staff or resident members, each one will need to [ensure that they are practicing](#) proper social distancing and mask wearing outside of their pod. Thinking of more possible alterations to community models is just one more way that Live Together™ is flexible and responds directly to the current needs of the community.

## PROJECT UPDATE

### EVERMORE SENIOR LIVING

Assisted Living & Memory Care in Woodbridge, Virginia



Evermore Senior Living is a Small House Assisted Living & Memory Care home in Woodbridge, Virginia. The Small House has 8 private suites with amenities that include a beauty and nail salon, spa bath, a residential style kitchen, and chef.

Visit their website to see a [virtual tour!](#)

## CUSTOMIZED WEBINARS

JSR provides customized webinars to meet various needs in the senior living, healthcare, and sustainability verticals - related to care models, design, and COVID-19.

Live Together™ is an Intergenerational Community Model that supports the intersection of supporting youth that succeed and older adults who desire to continue to have purposeful and meaningful lives throughout their retirement.

## GIVE US A FOLLOW

Live Together™ Community is now on social media!

- [LiveTogetherCommunity](#)
- [@LiveTogetherCom](#)
- [Live Together Community](#)
- [@livetoggethercommunity](#)



Check out the website  
[www.livetoggethercommunity.org](http://www.livetoggethercommunity.org)  
for more info and updates!